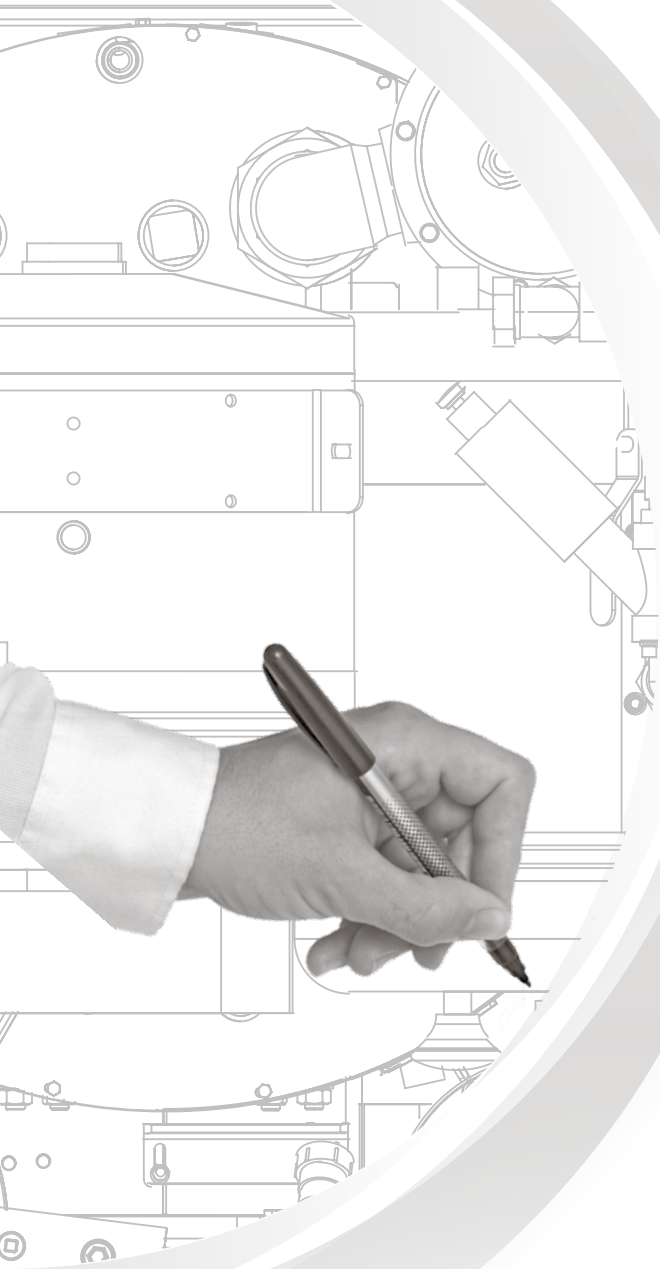


BÖÖWE

*j*Line



German technology & engineering
Designed by Jacob Jensen



BÖWE - iLine

BÖWE iLine PERC & Multisolvent® Dry Cleaning Machines

The new iLine series of dry cleaning machines sets a new standard in the range of products BÖWE Textile Cleaning can offer to customers worldwide. This new range combines and shares the same technology used in the well-known PremiumLine but taking into account the cost effective level these machines fit in without making compromises.

Thanks to this new design that uses a mix of implemented components used in other series (e.g. loading door, round distillation made in stainless steel AISI 316, drystat, etc.) and re-newed unit blocks (e.g. conical semi-auto cleaning water separator, slanted round air duct and new tanks) the iLine is a great solutions for many.

Obviously high degree of reliability and durability has been taken into consideration from the BÖWE engineers and even in these machines high-quality materials combined with perfected technology are part of the standard. All machines are equipped with FAG bearings and Viton® seals, stainless steel drum and pipes, BÖWE Kontiflex oversize condensers made in stainless steel AISI 316, accessible refrigeration unit with Copeland scroll compressors and German volume drying sensor. (BÖWE drystat), cataphoresic coated cooler and back plate.

ONE MACHINE MANY SOLVENTS OPTIONS

- ⊕ Hydro Carbon HC
 - ⊕ Silicone GreenEarth D5
 - ⊕ Solvon K4
 - ⊕ HIGLO
 - ⊕ Intense
 - ⊕ GenX
 - ⊕ Sensene
- and more to come



- ⊕ Excellent cleaning results
- ⊕ Machines available in Perc (Pi models) or Multisolvent® (Mi models)
- ⊕ Great care of garments for significantly longer textile life
- ⊕ Lower machinery cost - cleaning, extraction and drying in one operation
- ⊕ No trouble with special finishing like waterproofing, flame retardant finishes etc.
- ⊕ Cooling water does not get into contact with solvent
- ⊕ Low operating cost
- ⊕ Low personnel cost
- ⊕ Easy maintenance thanks to large openings, lint filters and relocated drive motor and cooling unit

BÖWE iLine

Height installed (all models)
H 3390 mm (1333,46")



ICONTROL

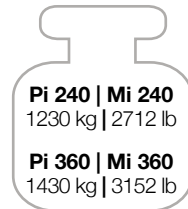
Free programmable multi language control with colour touch screen display. The device is ready for pc software connection with built-in USB port that enables the cleaning programs to be copied onto a U disk.

3 SELF-CLEANING SOLVENT TANKS

The geometrical shape and sloping bottom end of the tanks make sure the solvent is collected from the lowest dip point, allowing no deposits.

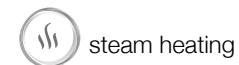
MACHINE WEIGHT

(without solvent)



Pi/Mi 240 Pi/Mi 360

Loading capacity	12kg / 27 lb	18 kg / 40lb
Still	115 l / 30.37 gal	115 l / 30.37 gal
Solvent tank 1	210 l / 55.47 gal	210 l / 55.47 gal
Solvent tank 2	145 l / 38.30 gal	145 l / 38.30 gal
Solvent tank 3	145 l / 38.30 gal	145 l / 38.30 gal

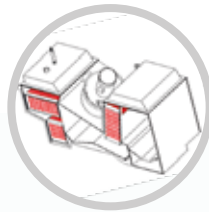
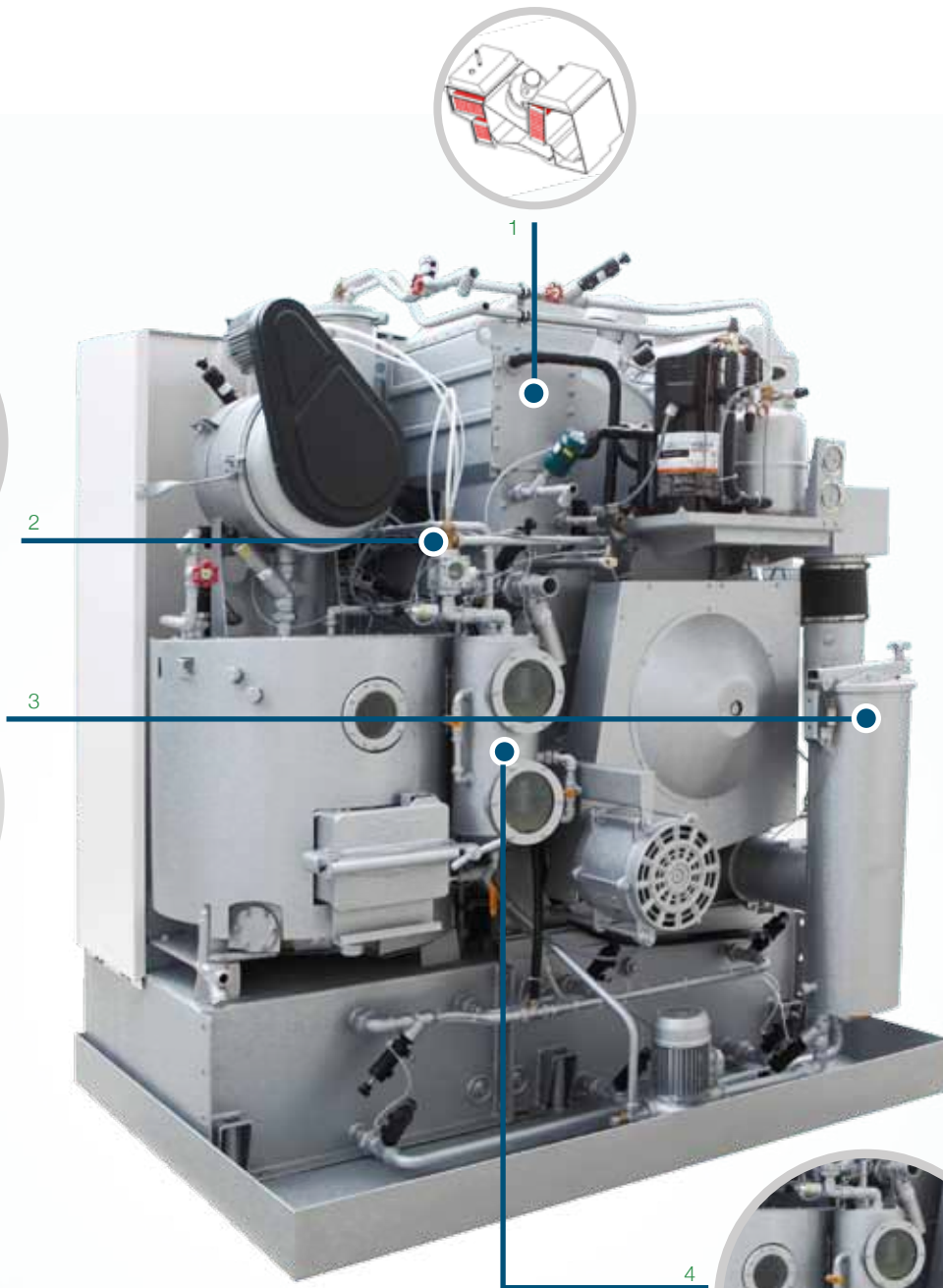


steam heating



electric heating





- 1 ⊕ Stainless steel Recovery unit with optimized flow and aerodynamic design
- ⊕ Stainless steel drum and pipes
- ⊕ FAG bearings and Viton® seals
- ⊕ Round and sloping distillation
- ⊕ Oversized BÖWE Kontiflex condenser made in stainless steel AISI 316
- ⊕ Frequency inverter (cleaning r.p.m. 40 and extraction r.p.m – 500)
- 2 ⊕ Power Drying System with BÖWE Drystat volume controlled sensor
- 3 ⊕ Large Button trap and lint filter
- ⊕ Accessible refrigeration unit with Copeland scroll compressor and heat recovery
- ⊕ Gentle drying and cool down via refrigeration valves
- ⊕ Thermostatically controlled still base and chamber heating
- ⊕ Cataphoresic back plate coating
- 4 ⊕ Conical water separator made in stainless steel with big sight glasses
- ⊕ Single Eco Extraction spin filter discs (17 BÖWE series)
- ⊕ Detergent stroke pump
- ⊕ Built-in strong solvent safety trough with underlay rail
- ⊕ Safety openings door locks
- ⊕ Viton® flaps & gaskets

EXTRA AVAILABLE OPTIONS ON DEMAND

- ⊕ SlimLine (distillation behind the loading door unit)
- ⊕ 2nd Eco extraction filter
- ⊕ 2nd dosing unit SPP 1
- ⊕ Overfill preventer for distillation (EN ISO 8230)
- ⊕ Spraymatic SPP 2
- ⊕ Emission free distillation rake out system (without barrel)
- ⊕ Stainless steel (316) solvent tanks
- ⊕ Loading door venting
- ⊕ Adsorption unit SLIMSORBA (Perc machines only)
- ⊕ Adsorption filter and cartridge

ROUND CONICAL SHAPED WATER SEPARATOR

The round water separator and the post-water separator is made in stainless steel with big sight glasses.

Thanks to the conical round shape design perfect maintenance and comfort are granted.





BÖWE Textile Cleaning GmbH

Lochmatt 1A - Industriegebiet West
77880 Sasbach - Germany

T +49 7841 60 02-200 | F +49 7841 60 02-230
info@bowe-germany.de | www.bowe-germany.de